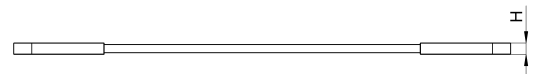
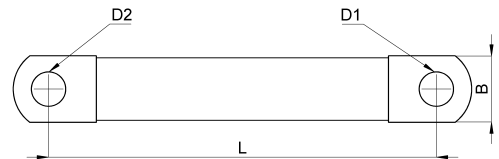
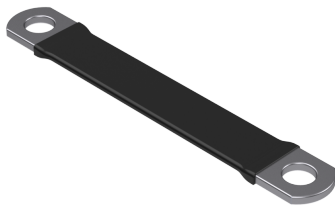


Technical data sheet

5-KT025030010swC / Flachbänderder

(Status as of 15/01/2024)



Design features

Dimensions (L / B / H) (mm)	300 x 20.1 x 2.4
Cross section	25mm ²
Single wire diameter (mm)	0.2
Mounting holes	M10 / M10
Weight (kg)	0,093
Part	earthing tape
Material	tinned copper
Mounting type	screw mounting

Order designation

Designation	Order No.	Description	PU
Flachbänderder	5-KT025030010swC	Cross section 25mm ² , hole both side M10, length 300mm, seamless, rounded and pressed on contact sleeves, single wire diameter 0,2mm, insulation: black shrinking tube, material: tin-coated copper	PU = 10 pcs.