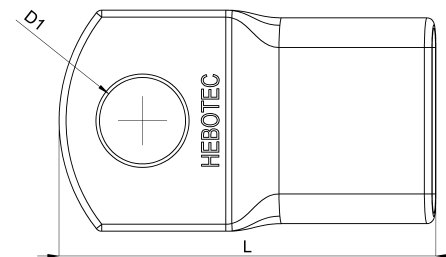
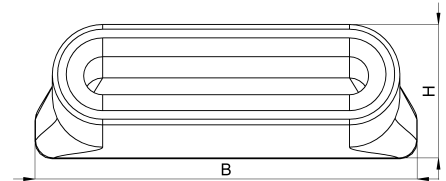


Technical data sheet

2040-064C / HPK 25/35 - 12

(Status as of 15/01/2024)



Design features

Dimensions (L / B / H) (mm)	54.2 x 31.7 x 11.1
Cross section	25.35mm ²
Hole diameter D1 (mm)	12,4
Mounting hole 1	M12
Weight (kg)	0,068
Part	cable lug
Material	tinned copper
Mounting type	screw mounting

Order designation

Designation	Order No.	Description	PU
HPK 25/35 - 12	2040-064C	HEBOPRESS cable lug for earthing tape, 25/35mm ² , M12	PU = 10 pcs.