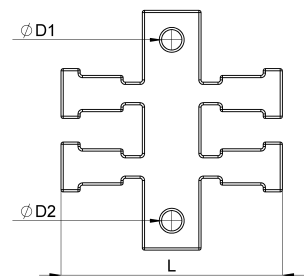
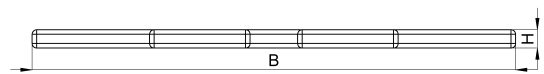
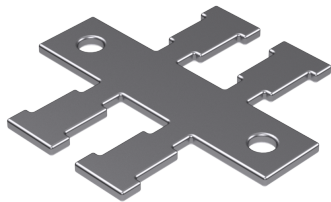


## Technical data sheet

1041-031C / KAL-2

(Status as of 15/01/2024)



### Design features

Dimensions (L / B / H) (mm)	49 x 53 x 2
Hole diameter (D1 / D2) (mm)	4,5, 4,5
Weight (kg)	0,019
Part	cable fixing plate
Material	stainless steel
Mounting type	screw mounting

## Order designation

Designation	Order No.	Description	PU
KAL-2	1041-031C	Cable fixing plate Number of teeth = 2	PU = 10 pcs.