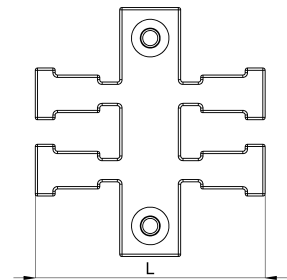
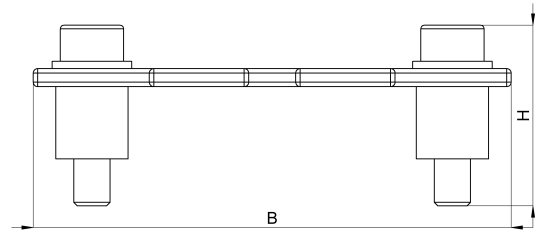
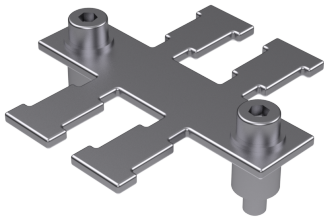


Technical data sheet

1041-010C / KAL-DH 2

(Status as of 15/01/2024)



Design features

Dimensions (L / B / H) (mm)	49 x 53 x 20
Weight (kg)	0,028
Part	cable fixing plate
Material	stainless steel
Mounting type	screw mounting

Order designation

Designation	Order No.	Description	PU
KAL-DH 2	1041-010C	Cable fixing plate for mounting on a spacer Number of teeth = 2	PU = 10 pcs.