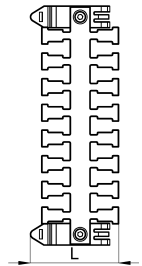
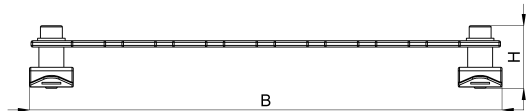
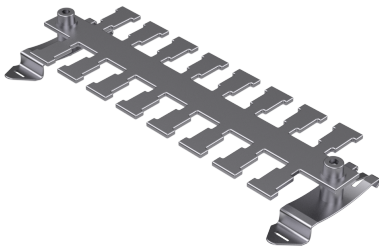


## Technical data sheet

1041-004C / KAL-SF 8

(Status as of 15/01/2024)



### Design features

Dimensions (L / B / H) (mm)	56.2 x 151.1 x 20.1
Weight (kg)	0,081
Part	cable fixing plate
Part 2	clip foot
Material	stainless steel
Material 2	steel nickeled
Mounting type	DIN rail

## Order designation

Designation	Order No.	Description	PU
KAL-SF 8	1041-004C	Cable fixing plate mounted on a clip foot Number of teeth = 8	PU = 10 pcs.