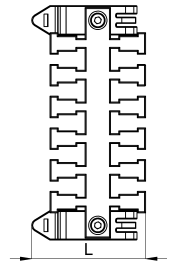
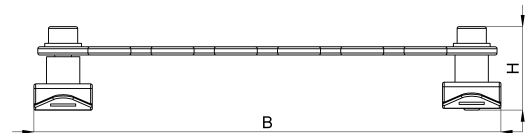
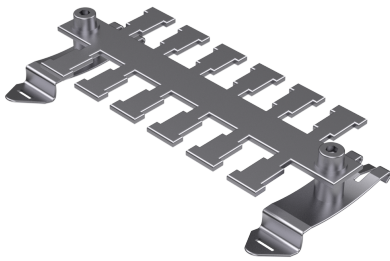


Technical data sheet

1041-003C / KAL-SF 6

(Status as of 15/01/2024)



Design features

Dimensions (L / B / H) (mm)	54.6 x 112.1 x 20.1
Weight (kg)	0,068
Part	cable fixing plate
Part 2	clip foot
Material	stainless steel
Material 2	steel nickeled
Mounting type	DIN rail

Order designation

Designation	Order No.	Description	PU
KAL-SF 6	1041-003C	Cable fixing plate mounted on a clip foot Number of teeth = 6	PU = 10 pcs.