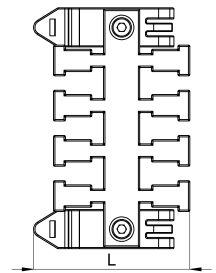
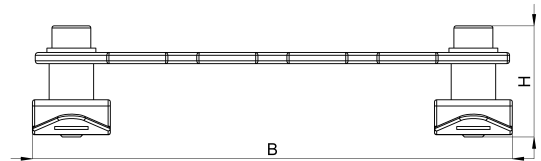
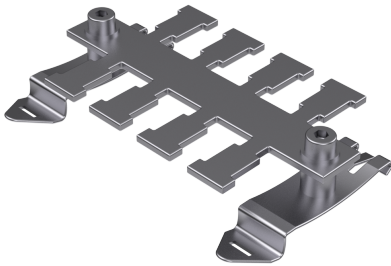


## Technical data sheet

1041-002C / KAL-SF 4

(Status as of 15/01/2024)



### Design features

Dimensions (L / B / H) (mm)	56.2 x 86.3 x 20.1
Weight (kg)	0,052
Part	cable fixing plate
Part 2	clip foot
Material	stainless steel
Material 2	steel nickeled
Mounting type	DIN rail

## Order designation

Designation	Order No.	Description	PU
KAL-SF 4	1041-002C	Cable fixing plate mounted on a clip foot Number of teeth= 4	PU = 10 pcs.