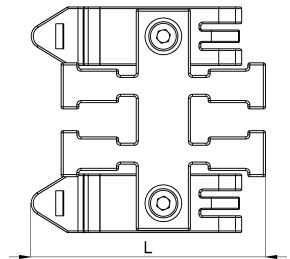
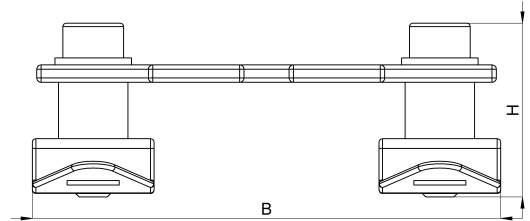
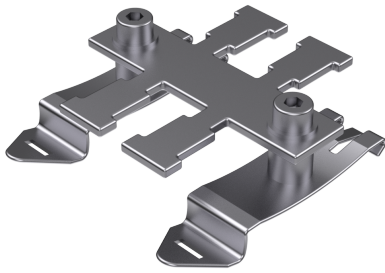


Technical data sheet

Cable fixing plates 1041-001C / KAL-SF 2

(Status as of 08/02/2024)



Design features

| | |
|-----------------------------|--------------------|
| Dimensions (L / B / H) (mm) | 56.3 x 20.1 x 56.3 |
| Weight (kg) | 0,037 |
| Part | cable fixing plate |
| Part 2 | clip foot |
| Material | stainless steel |
| Material 2 | steel nickeled |
| Mounting type | DIN rail |

Order designation

| Cable fixing plates | | | |
|----------------------------|------------------|---|--------------|
| Designation | Order No. | Description | PU |
| KAL-SF 2 | 1041-001C | Cable fixing plate mounted on a clip foot Number of teeth = 2 | PU = 10 pcs. |